

Ego



The Ego water heater combines simplicity and quality with Atlantic know-how

NEW



Characteristics

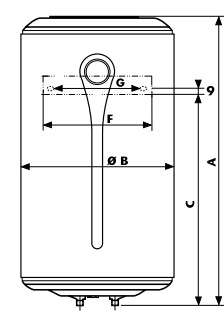
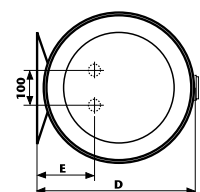
- New generation diamond-quality enamel 
- New Atlantic design
- Atlantic know-how and experience for your benefit
- IP 24 - Full compliance with European standards for electric safety and user protection
- CFC-free high density insulation for more energy savings

Go diamond-quality, Go Atlantic

Vertical range

Specifications				
Capacity (L)	Output (W)	Voltage (V)	Energy consumption (kWh/24h at 65°C)	Heat-up time 60°C (Δt=50°C)
30	1 200	230 (220/240)	0.80	1h12
50	1 500		0.95	1h53
80			1.40	3h09
100			1.85	3h48
120			2.15	4h48

Dimensions									
Capacity (L)	Dimensions (mm)							Manhole opening (Ø) mm	Net weight (kg)
	A	B	C	D	E	F	G		
30	431		235						14
50	581		380						16
80	814	433	590	451	165	100 to 280	240	72	20
100	973		740						22
120	1 127		915						29



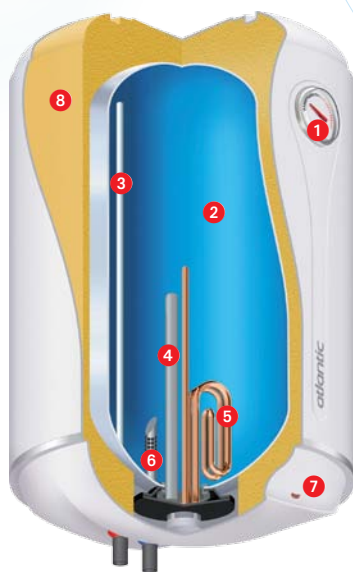
CE PC  IP 24



Diamond-quality enamel



Premium design

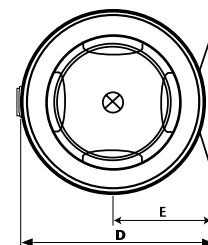
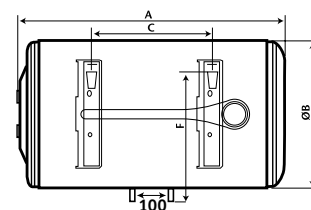


- 1 External thermometer
- 2 Diamond-quality enamel
- 3 Optimised stainless outlet pipe
- 4 Magnesium anode
- 5 Sheathed immersion heating element
- 6 Inlet diffuser
- 7 Pilot light
- 8 High density insulation

Horizontal range

Specifications				
Capacity (L)	Output (W)	Voltage (V)	Energy consumption (kWh/24h at 65°C)	Heat-up time 60°C (Δt=50°C)
50	1 500	230 (220/240)	1.15	1h38
80			1.55	2h38
100			1.95	3h36

Dimensions								
Capacity (L)	Dimensions (mm)						Ø (mm)	Net weight (kg)
	A	B	C	D	E	F		
50	571		198				72	16
80	800	433	349	451	234	343	72	20
100	959		497				72	22



CE G+ IP 24